

ALOYNING ANGUS

Simply Maternal

Selling 49 PAP Tested
Yearling Angus Range Bulls

6th Annual
Range Bull
Sale

Saturday

April 20, 2024 • 5 pm

Warren, MT





They Can Take it

**Yes, it's just a bunch of horses standin' out there in the rain.
The reason they are doin' it is easy to explain.
There is no shelter handy, so to travel ain't no good;
And they wouldn't go into a barn, not even if they could.**

**It is just a little weather, and they're plenty used to that.
Like a cow boy in the open, livin' underneath his hat.
All the horses and the people that has lived their life outside.
Seems to have a constitution that can take it on the hide.**

**Without a bit of thinkin' I could tell you right from here,
Of horses livin' on the range as long as thirty year.
While the horses that's in stables, and was always roofed and fed.
Lots of them before they're twenty, has been hauled off plenty dead.**

**So it seems the way with people, and it seems the way with stock.
And the cedar grows the toughest when it's right amongst the rocks.
That's why horses, men, and women, if they're made of proper stuff.
Gits along a whole lot better if they're raised a little rough.**

- Bruce Kiskaddon

Welcome

Thank you to all of you for your interest in our program here, and welcome to our 6th annual Loyning Angus sale.

As our "Simply Maternal" motto suggests, we are all about maternal functional efficiency. In our commercial herd, the cow that goes unnoticed the longest is the best cow. She is the cow whom we've never had to interfere with in any way. She does her job and never draws negative attention to herself by under producing. In a range cow outfit, the cow that overproduces generally works herself out of a job. So, we're back to that old cow that has done her job well enough within your environment/management system who as your trailing along one day, you wonder to yourself, "Who is that cow? She is ten years old, and I don't really remember anything about her." I'll tell you who she is. She is your most profitable cow. She is the premise of our entire breeding program. Our primary goal is to raise bulls that go out and produce functionally efficient range cows for our customers. You'll find the steer calf mates produced will be very acceptable in terms of terminal merit within your system too.

The ideal cow in our mind's eye is feminine headed, long necked with a strong level topline and is wedge shaped in her body composition. She is structurally correct, slopes off slightly from hooks to pins, is strong hocked, and has good feet. She has an excellent udder, and is moderate in her milk production. She is hormonally balanced as evidenced by her sleek and glossy hair coat. She is highly fertile. She has a soft and intelligent eye. This cow is of exceptional maternal disposition. Her whole world revolves around her calf, and she wants and loves to be a mother. She knows how to go out, forage, and scrap for her living if need be. This cow is closely bred for added prepotency to produce consistently and be able to renew herself through her daughters. These unquantifiable traits/qualities seem to get forgotten in the world of bigger is always better and biggest is best.

In the race for EPD, carcass, DNA marker superiority, or whatever it may be, maternal traits are generally the first traits to be left in the dust. Contrary to popular belief, you can't have it all. There are tradeoffs in everything. At Loyning Angus, we bowed out of the race a long time ago. Hell, we were never really in it. We want to focus on making the mother cow better at what she does. She is our factory after all, and we want to optimize her. Instead of single mindedly worrying about the quantity that our factory produces (at all costs), we want to optimize the functional efficiency of our factory and focus on the quality of what she's producing. Our focus is "Simply Maternal." We want you, our customer, to be able to produce females that enhance your bottom line through the ability to limit feed and labor expenses. Should you have specific end product goals in mind, you have the flexibility to terminally mate those females and hit those targets. We must remember that terminal traits belong on a plate and not in the replacement pen though.

With all that said, we run these cows as real as we can. They range on high desert native grass pastures for 8-10 months of the year depending on what mother nature

will allow. We don't prop them up, and if they are going to fail, we let them. During the two to four-month period they aren't on range grass, they eat hay. This winter they came out of the hills about the 25th of February. They are currently being fed 21 pounds of hay, a mixture of alfalfa and barley hay along with free choice salt and mineral. These cows would be an extremely profitable set of commercial production cows for any range cow outfit on the northern plains. They know how to get it done.

We breed our running age cows in multiple sire breeding pastures. This ensures that the herd bulls have to compete in order to mate and propagate themselves. Parentage is then determined on the resulting calves through DNA. During our fall preconditioning work, we choose the bulls that make the cut and our replacement heifers before DNA parentage results are known. This eliminates any preconceived notions on who ought to be the best. None of "He's out of old such and such he ought to be okay." They either make it, or they don't. All of the sires to these bulls breed/bred cows. The same can't be said about many AI stud sires as they never leave their run, and when they do, it is usually to be canned as the industry has moved on to the next latest, greatest thing.

As you look through our pedigrees, you will see that part of the bulls selling are registered and part are commercial purebred bulls. One group of the commercial purebreds stem from females purchased starting in 1993 from Cole Creek Angus. We didn't keep registration papers up on these cows, but we did keep track of pedigree. They are 100% purebred Angus. The Cole Creek based cows' sons will have a C following their name in the catalog. The other group stems from a set of cows purchased from my late friend Larry Leonhardt at Shoshone in 2011. The solid foundational base behind these bulls, with our own environmental and selection pressures applied to make "Simply Maternal" Loyning Angus cattle. The Shoshone based cows' sons will have an SH following their name in the catalog.

This set of bulls was weaned off of native grass pasture, mother's milk, salt, and mineral. At weaning they went on free choice sanfoin/orchard grass hay and two lbs. of AminoMAX Bull Developer. They are now worked up on to 11 lbs. of AminoMAX and are consuming about 15 lbs. of orchard grass hay per day. On average, they have gained 2.8 lbs. per day. The bulls were weighed onto test at weaning 10/18/23 and were weighed again on 2/26/24 for a 131-day test. The gain ratio was figured during that period. We slowly grow these bulls out in order to ensure structural soundness and set them up to succeed in rough breeding pastures. We understand that the breeding season is a marathon not a sprint and marathons aren't obese. These bulls are developed to go out and stay strong and productive throughout the entire breeding season and seasons to come. Yes, they will work down some, but the bull that doesn't generally isn't doing much. We will not be clipping the bulls as we like to be able to see them in their full hair coat. Their coat is a good indicator of masculinity and hormonal balance. These bulls have been handled almost exclusively horseback for their entire lives and are generally easy to handle and respect a saddle horse.

Prior to the 2020 breeding season, we made the decision to concentrate on further enhancing the ability of our cattle at high altitude. I searched and researched for the right outcross to bring in that would not disrupt the "Simply Maternal" direction of our program. All roads led to certain lines within the Emulation population. We are aware of the reputation for poor dispositions within the Emulation line and have been very careful in screening these genetics we've brought in. Initial results look very promising/useful and we look forward to using these genetics to further enhance the Loyning Angus line. We want these cattle to be able to thrive anywhere in the west, high or low.

This year we have added carcass ultrasound as another tool to aid customers in their selection process. The bulls were scanned by Eric Geving on 3/1/24. In this catalog we have published the IMF ratio and an actual REA/cwt. We will have a full supplement sheet of all carcass data available on sale day.

I would like to thank Dennis Voss at Horse Butte for being a mentor and one heck of a good friend to me. Our herd is strongly influenced by Horse Butte genetics, and they are a big part of our program and its forward progress. I want to thank all of my friends that I regularly "talk shop" with. I enjoy the hell out of it. Next I want to thank all my good neighbor friends/customers. We wouldn't and couldn't be here without you and all of your help! Grandma Bonnie, without your good summer grass and moral support we couldn't do it. Thank you! Dad, thank you for your patience, encouragement and stockman knowledge. Your "range savvy" guidance has a strong influence on us pressuring the things we pressure in our program. I know I can get gruff and hard to be around sometimes, but I always appreciate everything you do for us. Mom you're about the best MOM (notice the capitalization) a guy could ever want. Thank you for always having my back. Thanks to Brook's family for always helping us whether it's babysitting or working cattle. We know we can always count on your help. Brook, thank you for not killing me during our work on this catalog.

If you have any questions, please don't hesitate in letting us know. We are honored by your consideration of our program.

Ben Loyning



ALOYNING ANGUS

Simply Maternal

6th Annual Bull Sale
Saturday • April 20, 2024

Sale Starts at 5:00 p.m.

Auctioneer

Bronson Smith

Sale Day Phones

Ben (307) 271-1786

Brook . . . (307) 202-0246

*Please stick around
after the sale to socialize
and enjoy a meal.*

Sale Location

At the Ranch • 379 Quarry Road • Warren, MT

Accommodations

60 minutes South of Billings, MT and

40 minutes North of Powell, WY

Sale Format

Bulls will be available for viewing at the sale location. We will play a pre-recorded video of the bulls during the auction for buyer viewing during the live auction.

Terms & Conditions

The cattle will sell under the standard terms and conditions as recommended by the American Angus Association.

Herd Health

Bulls have been vaccinated twice (branding/preconditioning) with Alpha 7 MB1, One Shot BVD and Inforce 3, once with BoviShield Gold One Shot and Somubac (weaning), and in November were poured with CleanUp II and injected with Dectomax. On 3/10/23 received a dose of Bovi-Shield Gold FP 5 VL5 and a shot of Fusogard for foot rot.

Fertility

A breeding soundness exam was completed by Matthew Asay, DVM on March 18, 2024. A comprehensive supplement sheet with motility and morphology scores will be available sale day or contact us prior to sale day and we would be happy to share that information with you.

PAP Tested

Bulls were PAP tested March 22, 2024 by Flying A Animal Health, Allen Gotfredson, DVM from Ten Sleep, WY. PAP test was at 4,750 feet. We recommend if bulls will be used over 7,500 feet, that they have a PAP score of 41 or below.

Delivery

Delivery for bulls is free within 300 miles and at cost thereafter. If you pick your bulls up within the week following the sale, a \$50 per head discount will be given. Delivery will take place within the month following the sale. If you need your bulls sooner than that, please let us know. Feed up until the first of May is on us and will cost \$2.50 per head per day thereafter if you want us to keep your bulls.

The cost for health work on bulls selling to Canada will be the responsibility of the buyer. We will deliver bulls going to Canada to the nearest American Port of Entry.

All proper health work will be completed for shipment within the continental US.

Liability

Everyone attending this sale does so at their own responsibility and risk and without liability on the part of the owners or their employees.

Inspection of Bulls

The bulls are available for inspection any time prior to sale day at the ranch, 379 Quarry Road, Warren, Montana. The day of the sale we ask that you hold off until noon so that we can prepare the bulls for more convenient viewing. Videos will be posted online at LoyningAngus.com.

Retained Interest

Loyning Angus and Wil Loyning will be retaining interest in select bulls. The bulls we are retaining interest in will be posted sale day and announced from the auction block.

Guarantee

Bulls sell as guaranteed breeders. If a problem arises, we will deal with it on a case by case basis. Your success is important to us, so we want these guys to do a good job for you.

Bid by Phone

If you are unable to attend and would like to bid by phone, please give Ben a call at (307)-271-1786. We will have someone call you during the sale or you can leave a bid. You can also call Karoline Rose at (406) 285-1907

Online Bidding

New this year we have added online bidding ran by KRose Company. You can register to bid and find more information on our website at loyningangus.com/productionsale. Please call Karoline Rose with questions or help registering to bid at (406) 285-1907.

Sale Terms

Cash, to be paid sale day.

Sale Order

Bulls sell in catalog order which is by age, oldest to youngest.

Tag Color Key

Black – ET

Red – Natural born registered

Yellow – Trace to unregistered
Shoshone cows

White – Trace to unregistered
Cole Creek cows

Purple – Wil's cattle

Orange – Sam's cattle

Pink – Josie's cattle

Blue – Gus's cattle

ONLINE BIDDING AVAILABLE

Absentee bidding available up until sale day | Live bidding available during the sale

**find more information and register
to bid on our website:**

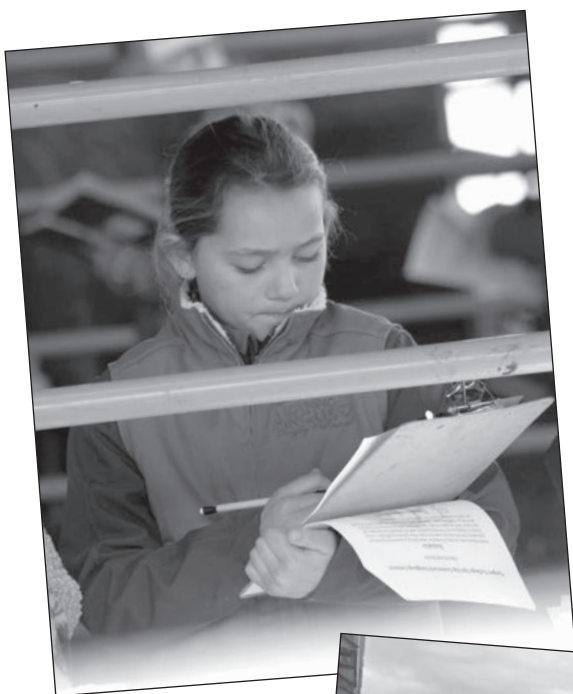
www.loyningangus.com/production-sale

Call for Support: (406) 285-1907



**SCAN THE QR CODE AND
REGISTER TO BID!**

**LOYNING
ANGUS** 
Simply Maternal



How do you Ballyhoo?
Ballyhoo
PRINTING & DESIGN 
BallyhooPrinting.com
406 • 538 • 7988 Lewistown, MT

Reference Sires



Loyning 1116 Encore 76

Reference Sire

Loyning 1116 Encore 76

Bull AAA 18995532 • Hot Brand 76 • 02/04/17

Shoshone Encore 6310
Horse Butte 1116 of 3116
Shoshone Ester 3116 #

Shoshone Bob 2712#
Shoshone Frances MHE63-93#
Shoshone Quent 7103
Shoshone Ester 3111

M C C Logan
Jad Ester 3750
Shoshone Ester 3128

Friars of Wye Umf 7996
Shoshone Prudence 6157
Shoshone Lester 2946
Shoshone Ester 3164

CED	BW	WN	YW	SC	CEM	Milk	PAP
+12	-1.3	+20	+31	+7.5	+13	+17	-.68

Sire of lots 14, 17, 20, 24, 38, 39, 41

Loyning 1116 Encore 76 AKA "Boulder Top" was used here are a yearling and them was used in heavy service at our friends Boone and Marje Taylor's y-Bar Ranch in Bicknell, Utah for a couple of years before we brought him back into service here. The Taylors run cattle up to 12,000 ft and the Boulder Top nickname is an homage to the highest timbered plateau in North America where they summer their cattle. Boulder Top had a PAP score of 38 at 7,300' as a 2 year old. After calving his first daughters here, we just had to have him back in our own mob. They look to be optimal in their type, and are stamped in the same mold as Boulder Top's full sisters in production here. Feminine, fertile, wedge shaped, good udder quality, optimal level of production. Along with offering a high level of maternal prowess at upper elevations, Boulder Top offers some calving ease too. Look for more influence from Boulder Top genetics in the years to come. Boulder Top has moved on and is now breeding cows for Dockweiler Angus in Chadron, NE. We have retained 4 sons from the 2023 calf crop to further his influence here.

Bred by Loyning Angus and proudly owned with Boone and Marje Taylor, Y Bar Ranch in Bicknell, UT and John and Ann Dockweiler in Chadron, NE.

Reference Sire

Loyning Etch 80

Bull AAA 19234792 • Hot Brand 80 • 01/28/18

Horse Butte 1126 of 3128
Horse Butte 7133 of 3131
Shoshone Ester 3131

Shoshone Encore 6310
Shoshone Ester 3128#
Shoshone Laser 2310
Shoshone Ester 3116#

M C C Logan
Jad Ester 3750
Shoshone Ester 3128

Friars of Wye Umf 7996
Shoshone Prudence 6157
Shoshone Lester 2946
Shoshone Ester 3164

CED	BW	WN	YW	SC	CEM	Milk	PAP
-1	+1.4	+21	+33	+1.0	-1	+24	+1.18

Sire of lots 1, 2

Etch 80 sold to Horse Butte Ranch as the Pick of the Flush in our inaugural sale in 2019. He was a very complete individual, thick made, attractive and correct. He has went on and spent some time at the top of the heap in the mob at Horse Butte. I always wanted to bring him back into the program and when we flushed the DDA Galatea 859 he was my first choice. He didn't disappoint. That flush yielded two nice bulls and two nice heifers. The bulls are in the sale and the two heifers will be retained in our herd. We have plans to use Etch further at some point in the future.

Bred By Loyning Angus and proudly owned with Horse Butte Ranch



Loyning 7133 Ringo 81

**Reference
Sire**

Loyning 7133 Ringo 81

Bull AAA 19234790 • Hot Brand 81 • 01/29/18

Horse Butte 1126 of 3128	Shoshone Encore 6310
Horse Butte 7133 of 3131	Shoshone Ester 3128#
Shoshone Ester 3131	Shoshone Laser 2310
	Shoshone Ester 3116#
M C C Logan	Friars of Wye Umf 7996
Jad Ester 3750	Shoshone Prudence 6157
Shoshone Ester 3128	Shoshone Lester 2946
	Shoshone Ester 3164

CED	BW	WN	YW	SC	CEM	Milk	PAP
+0	+1.1	+30	+42	+86	+8	+23	+40

Sire of lots 6, 19, 32

81 was the bull we chose second when we sold choice of the flush at our inaugural bull sale in 2019. He is conformationally very correct and stands on excellent feet. He is clean made with a very strong top and is an excellent worker in the breeding pasture. He has several daughters in the replacement pen. We should see more 81 in the future and it is our hope that he and brother 83 carry the torch for their sire in the future here. Flush sisters are very productive calf raisers in an angular, functional, feminine package.

Bred and owned by Loyning Angus



Loyning 7133 Ringo 83

**Reference
Sire**

Loyning 7133 Ringo 83

Bull AAA 19234795 • Hot Brand 83 • 01/30/18

Horse Butte 1126 of 3128	Shoshone Encore 6310
Horse Butte 7133 of 3131	Shoshone Ester 3128#
Shoshone Ester 3131	Shoshone Laser 2310
	Shoshone Ester 3116#
M C C Logan	Friars of Wye Umf 7996
Jad Ester 3750	Shoshone Prudence 6157
Shoshone Ester 3128	Shoshone Lester 2946
	Shoshone Ester 3164

CED	BW	WN	YW	SC	CEM	Milk	PAP
+2	+0.6	+22	+27	+61	+4	+30	+19

Sire of lots 4, 5, 10, 11, 25, 28, 29

83 might have been the sleeper in a rally strong 7133 X JAD Ester 3750 flush. He has a similar look to his maternal brother Equinox at this stage. Long, thick, and correct. He is also the most moderate framed of the group of flush brothers that stayed here. He has excellent testicular conformation and an overall virile look about him. We are now calving 83 daughters. They look to be feminine, broody, milky, and productive range cows. Solid stuff.

Reference Sire

Loyning Echosmith 87

Bull AAA 19234789 • Hot Brand 87 • 02/07/18

Shoshone Echo 1702
Horse Butte Beetseed 313
HBR Shoshone Ester 1130

Shoshone Balboa N1702
Shoshone Erica LJFC17A
Shoshone Encore 6310
Shoshone Ester 3128#

Shoshone Echo 1702
HBR Shoshone Ester 7127
Shoshone Ester 3128#

Shoshone Balboa N1702
Shoshone Erica LJFC17A
Shoshone Encore 6310
Shoshone Ester 3116#

CED	BW	WN	YW	SC	CEM	Milk	PAP
+5	+0.4	+21	+25	-.05	+10	+14	-.44

Sire of lot 12

Echosmith 87 is a close bred bull who is just about equal parts Shoshone Encore, Shoshone Echo/Balboa, and Shoshone Ester 3128. He is very functionally correct and virile. The 87 son in this sale is stamped in his mold. The 87 daughters that we have in production are sharp made, refined, and functional.

Bred and owned by Loyning Angus



Loyning Forkin 92

Reference Sire

Loyning Forkin 92

Bull AAA 19550939 • Hot Brand 92 • 02/01/19

Franchester of Wye#
Shoshone Viking GD60#
Shoshone Wendy D60

Conan of Wye#
Friona of Wye
Schearbrook Shoshone#
C A R Chancellor 3548

Shoshone Pivot 6159
Shoshone Frances 6306
Shoshone Frances 6347

Shoshone Pyus 6157
Shoshone Prudence 6159
Shoshone Egan 3128
Shoshone Frances 6357#

CED	BW	WN	YW	SC	CEM	Milk	PAP
-3	+2.5	+24	+27	+5.7	+5	+17	+3.4

Sire of lots 8, 13, 15, 16, 26, 31, 33, 37, 40, 44, 46

Forkin 92 was the bull we chose to keep from the Viking X Frances 6306 flush. He was the most moderate, cleanest patterned bull in the flush. He was used in a single sire pasture on our Ester cows for the 2020 breeding season. Shoshone Frances 6306, his dam, was a model cow in her heyday. We thought 6306 would be a positive influence to bring in and stir the pot just a bit. He has sired some nice sons in this sale offering. His daughters are moderate, easy doing, and broody. Bred by Scott Shively and owned by Loyning Angus.



Shoshone Frances 6306

Dam of Loyning Forkin 92

Reference Sire

Loyning Echosmith 93

Bull AAA 19543430 • Hot Brand 93 • 02/01/19

Shoshone Echo 1702
Horse Butte Beetseed 313
HBR Shoshone Ester 1130

Shoshone Balboa N1702
Shoshone Erica LJFC17A
Shoshone Encore 6310
Shoshone Ester 3128#

Shoshone Echo 1702
HBR Shoshone Ester 7127
Shoshone Ester 3128#

Shoshone Balboa N1702
Shoshone Erica LJFC17A
Shoshone Encore 6310
Shoshone Ester 3116#

CED	BW	WN	YW	SC	CEM	Milk	PAP
+6	+0.8	+26	+31	+57	+13	+7	-2.20

Sire of lot 43

Echosmith 93 is a full brother to Echosmith 87. 93 is close bred, Echo, Encore, Ester 3128, and Ester 3116. He is a long geared, country covering machine. His one son in the sale is a good one! Bred and owned by Loyning Angus.

Reference Sire

Loyning El Caporal 1138

Bull AAA 20148444 • Hot Brand 1138 • 03/12/21

Sinclair Plains Boss 5B02
Sinclair Old Soul 9L16
Sinclair M Emulous 4ET1 D47

Sinclair Patriarch 3B47
Sinclair Lady Ida 7V19 04F3
N Bar Explosion TNT#
N Bar Miss Emulous B514

Loyning Evolver 73
Loyning Ester 9047
Loyning Ester 7007

Papa Forte 1921#
HBR Shoshone Ester 7133
Horse Butte 6141 of 3141
Jad Ester 3750

CED	BW	WN	YW	SC	CEM	Milk	PAP
-2	+1.3	+35	+63	+47	+2	+20	+0.05

Sire of lots 3, 9

1138 means ranch foreman in Spanish. He's a boss kind of bull. He is a thick made athletic bull out of a sweet little cow. Yes he performed well and did everything we asked but ultimately his mother was the deciding factor in keeping him here. She is ultra feminine yet sturdy enough, is very functionally efficient in her make-up, and her maternal disposition is as good as it gets. 1138's pedigree is made up of excellent range cattle and that is what I expect he and his sons to leave behind. We have retained several nice 1138 heifers and I'm anxious to get them into production. Expect to see more from 1138 in the future.



Loyning Ester 9047

Dam of Loyning El Caporal 1138 and Lot 20

**Reference
Sire**

JAD Extra F3018

Bull AAA 19102812 • Hot Brand 82 • 02/10/18

N Bar Emulation Ext Z52
N Bar Extra B310 A144
N Bar Primrose Y3051 #

JAD Prudent Lad 6157
JAD Erica S41
Shoshone Erica A344

N Bar Emulation EXT#
N Bar Clova Pride X4170
N Bar Emulation EXT#
N Bar Primrose 2429#

Shoshone Lud 840
Shoshone Prudence 6157
Shoshone Euston 3131
Shoshone Erica A345

CED	BW	WN	YW	SC	CEM	Milk	PAP
+7	-0.5	+34	+64	+1.03	+10	+24	-.61

Sire of lots 42, 47, 49

We bought 82 (aka Johnny X) sight unseen from Dockweiler Angus in Nebraska. Originally he was brought here for use on the commercial cows. When he arrived, I really appreciated his quiet demeanor, length, soundness, and masculinity. Johnny X also has a beautiful dam, S41, who I had seen on a previous visit. While I loved the dam side of his pedigree, the sire side of his equation was very proven too. His sire N Bar Extra B310 A144 produced useful, long lasting females, virile sons, and his progeny were always deceptively heavy when they crossed the scale. Johnny X also descends from lines known to thrive at high altitude. The more I studied him, the more I knew I needed to use him. It was a no brainer. 82 had already been through a season of use at Dockweiler's when we got him. He was as influential there as any yearling bull has ever been, siring a very high volume of high quality, useful heifers and bulls. As a multi-sire breeding bull, he is top notch. In the breeding pasture, he is very methodical, moving from one hot cow to the next; never in a hurry, breed them once and move on. He has excellent constitution and holds up well throughout the breeding season. We are now calving the first Johnny X daughters and they look every bit the part of a hard working, problem free, fertile, productive range cow. I believe the Johnny X sons in this sale are as commercially relevant as anything we've ever offered. They will be functional and profitable for every segment along the chain.

Bred by and proudly owned with Dockweiler Angus



JAD Erica S41 Dam of JAD Extra F3018



A good day
at the
Bridger
Youth Rodeo!



Sinclair Old Soul 9L16

**Reference
Sire**

Sinclair Old Soul 9L16

Bull AAA 19475265 • Hot Brand 9L16 • 02/26/19

Sinclair Patriarch 3B47	Sinclair Boss#
Sinclair Plains Boss 5BO2	Sinclair Lady Ida 7OC7 2V11
Sinclair Lady Ida 7V19 04F3	N Bar Emulation Ext A1747
	Sinclair Lady Ida 04F3 B154
N Bar Explosion TNT	N Bar Explosion#
Sinclair M Emulous 4ET1 D47	N Bar Enchantress U130
N Bar Miss Emulous B514	N Bar Emulation Extra V129
	N Bar Miss Emulous Y3502A

CED	BW	WN	YW	SC	CEM	Milk	PAP
+5	-0.2	+34	+57	-.27	+9	+25	+11

Sire of lots 18, 50

We bought Old Soul through the 2020 Sinclair Cattle Company sale to use as a heifer bull. His mother was Logan Bakers favorite cow 4ET1 and his paternal grandmother 7V19 was my favorite cow from a previous visit. 4ET1 set the standard for foot/udder quality, fertility and production at Sinclair. She was a problem free, hardworking cow. She died at 15 the summer she was nursing Old Soul so he was a little behind most of the other bulls in that sale and went relatively unnoticed. He had/has excellent feet and I thought he was the most athletic, best structured, bull in the sale. I got him bought and hauled him home. When I unloaded him, I felt like a thief as I watched him glide around the pen with ease and intelligence. He had an all knowing, wise beyond his years way about him so we changed his name to Old Soul. His sons are moderate, strong topped, and intelligent in their demeanor. They also PAP tested really well. His daughters look good. They are feminine, long, productive and graceful in motion. We are very pleased with Old Soul progeny thus far.

• Bred by Sinclair Cattle Company and proudly owned with Baker Livestock and Sinclair.



Josie and Murphy won grand champion market lamb



Sinclair Emulation 00V10

**Reference
Sire**

Sinclair Emulation 00V10

Bull AAA 19934620 • Hot Brand 00V10 • 04/05/20

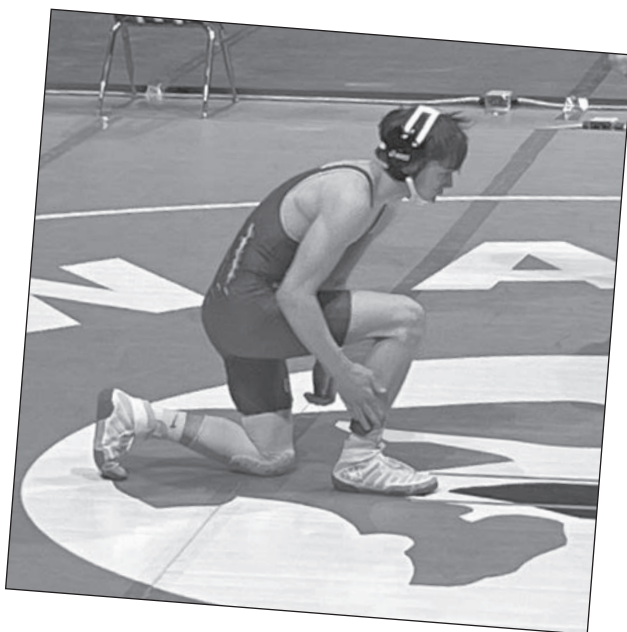
Sinclair Emperor 0XT51	Sinclair Extra 4X13#
Sinclair Emperor 6XO2	Sinclair Blkbird 7OC10 J472
Sinclair Ms Emulous 2V20 A40	N Bar Emulation Ext A1747
	N Bar Miss Emulous X3091#
Sinclair Rito 2R1	Rito Revolve OR5
Sinclair K Bty 5RX21 0F1	N Bar Miss Emulous A404
Sinclair K Bty 0F1 2V3	Emulation N Bar 5522#
	N Bar Kinochtry Bty SCC 2V3#

CED	BW	WN	YW	SC	CEM	Milk	PAP
-2	+2.2	+50	+88	+82	-5	+23	+1.20

Sire of lots 7, 30, 44, 48

00V10 or Kevin as he's known around here was brought in to inject a little more bone and substance. We thought he was the best bull offered in the 2021 Sinclair sale. Kevin is thick made, with a long stride, good feet, good nuts, good disposition, good performance, and a strong maternal heritage. We thought he could bring in some more performance without too much disruption to our maternal direction. The Kevin sons are square made and easy going. We are calving his first daughters and they are deep bodied, yet feminine, easy doing, nice uddered, quiet dispositioned mothers so far. The Kevin sons will be a nice way for old customers to inject some new blood.

• Bred by, and owned with Sinclair Cattle Co.



Sam, a freshman, at state wrestling



1 Loyning AJ Gamebred 300

Bull AAA +20783251 • Hot Brand 300 • 02/12/23

Horse Butte 7133 of 3131
Loyning Etch 80
Jad Ester 3750

Horse Butte 1126 of 3128
Shoshone Ester 3131
M C C Logan
Shoshone Ester 3128
O C C Emblazon 854E#
D D A Melisa 824#
High Valley 4C6 Ambush#
D D A Galatea 423

Scrotal	36
IMF Ratio	100
REA/cwt	1.19

Birth Wt	Wn Adj Wt	Wn Ratio	Yr Adj Wt	Yr Ratio	Gain Ratio	PAP
74	665	100	1195	100	100	38
CED EPD	BW EPD	WN EPD	YW EPD	Milk EPD	\$EN	
+9	-0.6	+29	+44	+27	+19	

We start the sale with maybe the most complete individual we've ever publicly offered, and he belongs to our youngest son Gus. Gus had a really nice heifer lose her calf due to severe cold so I offered him an embryo of his choosing and Lot 1 is the embryo he chose. I'm not a fan of using too many superlatives, but, this is a Bonified, Grade A, All-American, Bad Ass Herd Bull. His dam and maternal granddam were always my favorite cow pictures in the Diamond D Angus sale catalog as I believe they are fine examples of high quality, functionally efficient maternal traits. Naturally when we had the chance to bring 859 into our program we jumped on it. We flushed her to Loyning Etch 80 and ended up with 2 bulls and 2 heifers, all very useful in their make-up. Lot 1 is hard for me to pick on. He has that herd bull presence and athleticism in a very attractive package. He's the real McCoy. I'll shut up now and let him speak for himself. We would like to collect a bit of semen for our own use before this bull leaves.



Lot 1 on summer grass



DDA Galatea 859
 Dam of Lots 1 and 2

2 Loyning Graham 301

Bull AAA 20783249 • Hot Brand 301 • 02/14/23

Horse Butte 7133 of 3131	Horse Butte 1126 of 3128
Loyning Etch 80	Shoshone Ester 3131
Jad Ester 3750	M C C Logan
	Shoshone Ester 3128
DDA Emblazon 27C#	O C C Emblazon 854E#
DDA Galatea 859	D D A Melisa 824#
Dda Galatea 031	High Valley 4C6 Ambush#
	D D A Galatea 423

Scrotal	35
IMF Ratio	100
REA/cwt	1.37

Birth Wt	Wn Adj Wt	Wn Ratio	Yr Adj Wt	Yr Ratio	Gain Ratio	PAP
76	660	100	1110	100	100	39

CED EPD	BW EPD	WN EPD	YW EPD	Milk EPD	\$EN
+5	+0.0	+32	+53	+23	+17

This flush brother to Lot 1 offers many of the same features as his brother. Lot 2 might be just a hair more moderate in his frame, maybe a bit more muscle expression and comes with an excellent disposition.

3 Loyning 1138 El Caporal 314

Bull AAA 20796186 • Hot Brand 314 • 02/25/23

Sinclair Old Soul 9L16	Sinclair Plains Boss 5B02
Loyning El Caporal 1138	Sinclair M Emulous 4ET1 D47#
Loyning Ester 9047	Loyning Evolver 73
	Loyning Ester 7007
Loyning Equinox 7	Horse Butte 6141 of 3141
Loyning Tonia 073	Jad Ester 3750
Loyning Tonia 3065	Jad Lad LX T2164 WP07
	Loyning Tonia 0078

Scrotal	37
IMF Ratio	84
REA/cwt	1.17

Birth Wt	Wn Adj Wt	Wn Ratio	Yr Adj Wt	Yr Ratio	Gain Ratio	PAP
70	578	100	978	95	88	35

CED EPD	BW EPD	WN EPD	YW EPD	Milk EPD	\$EN
+5	-0.4	+28	+45	+20	+21

It was -20 and windy on the night Lot 3 was born. His mother got him up and going without my assistance. It was a feat far above and beyond any reasonable expectation. She was probably telling the other cows "I can't believe that idiot turned the bulls out that early!" Well that idiot agrees, and decided to turn the bulls out a few weeks later the next season. Don't hold his short ears and frozen nostrils against him. Heifer bull.



4 Loyning 83 Ringo 320

Bull AAA 20796124 • Hot Brand 320 • 02/27/23

Horse Butte 7133 of 3131
Loyning 7133 Ringo 83
Jad Ester 3750

Horse Butte 1126 of 3128
Shoshone Ester 3131
M C C Logan
Shoshone Ester 3128

Horse Butte 796 of 9116
Loyning Lady Ida 1018
BT Lady Ida 737P

HBR 4C6 Ambush 917
HBR Shoshone Ester 9116
BT Rolls Royce 412L
BT Lady Ida 9L

Scrotal
36
IMF Ratio
72
REA/cwt
1.23

Birth Wt	Wn Adj Wt	Wn Ratio	Yr Adj Wt	Yr Ratio	Gain Ratio	PAP
83	604	104	1050	101	98	36

CED EPD	BW EPD	WN EPD	YW EPD	Milk EPD	\$EN
+0	+1.7	+29	+45	+27	+16

Nice, thick made 83 son here. His dam is a 13 year old Horse Butte 796 of 9116 daughter who has never missed a lick. She is broody yet feminine, with excellent feet and a tidy udder. I like this good cow bull a lot.

5 Loyning 83 Ringo 321

Bull AAA 20796143 • Hot Brand 321 • 02/27/23

Horse Butte 7133 of 3131
Loyning 7133 Ringo 83
Jad Ester 3750

Horse Butte 1126 of 3128
Shoshone Ester 3131
M C C Logan
Shoshone Ester 3128

Loyning Pistol 3061
Loyning Dottie 7032
Loyning Dottie 5008#

Horse Butte 7196 of 1916
Jad Prudence 6110
Horse Butte 7196 of 1916
Loyning Dottie N 2024

Scrotal
37
IMF Ratio
115
REA/cwt
1.16

Birth Wt	Wn Adj Wt	Wn Ratio	Yr Adj Wt	Yr Ratio	Gain Ratio	PAP
85	597	103	1031	100	95	39

CED EPD	BW EPD	WN EPD	YW EPD	Milk EPD	\$EN
+2	+1.7	+27	+39	+21	+20

Another nice 83 from a feminine, tidy uddered, hard working dam. Cow bull.

6 Loyning 81 Ringo 326 C

Bull AAA Purebred Bull • Hot Brand 326 • 02/28/23

Horse Butte 7133 of 3131
Loyning 7133 Ringo 81
Jad Ester 3750

Horse Butte 1126 of 3128
Shoshone Ester 3131
M C C Logan
Shoshone Ester 3128

Horse Butte 7133 of 3131
Loyning C Purebred Cow 4020
Loyning C Purebred Cow 1081

Horse Butte 1126 of 3128
Shoshone Ester 3131
Horse Butte 7196 of 1916
Loyning C Purebred Cow 3044

Scrotal
35
IMF Ratio
82
REA/cwt
1.14

Birth Wt	Wn Adj Wt	Wn Ratio	Yr Adj Wt	Yr Ratio	Gain Ratio	PAP
73	572	96	1028	98	101	39

CED EPD	BW EPD	WN EPD	YW EPD	Milk EPD	\$EN
na	na	na	na	na	na

The old reliable 4020 strikes again. This bull would be classically linebred Horse Butte 7133 of 3131. If you like self reliant range cattle, then this bull has much to offer your program. Although he is a lower birthweight bull, there is some potential for more birthweight behind him. Be your own judge. His dam is a maternal sister to lot 34, if you want to buy into our program, buy them both and turn them out!



7

7 *Loyning 00V10 Kevin 330*

Bull AAA 20796147 • Hot Brand 330 • 03/01/23

Sinclair Emperor 6X02
 Sinclair Emulation 00V10
 Sinclair K Bty 5RX21 0F1
 Horse Butte 6141 of 3141
 Loyning Ester 7000#
 Jad Ester 3750

Sinclair Emperor 0XT51
 Sinclair Ms Emulous 2V20 A40
 Sinclair Rito 2R1
 Sinclair K Bty 0F1 2V3
 Horse Butte 1116 of 3116
 Shoshone Ester 3141
 M C C Logan
 Shoshone Ester 3128

<i>Scrotal</i>
39.5
<i>IMF Ratio</i>
82
<i>REA/cwt</i>
1.10

<i>Birth Wt</i>	<i>Wn Adj Wt</i>	<i>Wn Ratio</i>	<i>Yr Adj Wt</i>	<i>Yr Ratio</i>	<i>Gain Ratio</i>	<i>PAP</i>
83	609	105	1151	111	119	38

<i>CED EPD</i>	<i>BW EPD</i>	<i>WN EPD</i>	<i>YW EPD</i>	<i>Milk EPD</i>	<i>\$EN</i>
+5	+1.9	+39	+66	+22	-5

Attractive Kevin son with herd bull type potential. His pathfinder dam, Loyning Ester 7000, has put 5 good bulls in the sale who have all went onto be favorites at their new homes. She finally had a heifer calf for us this year! This high performance bull has jumped through every hoop. He should sire payweight in his steers and deep made, broody, functional daughters. Lot 7 was on my short list to stay here and breed cows but we can't keep them all. Excellent cow bull.

8 *WJL 92 Forkin 332*

Bull AAA 20796146 • Hot Brand 332 • 03/01/23

Shoshone Viking GD60#
 Loyning Forkin 92
 Shoshone Frances 6306
 Horse Butte 1116 of 3116
 WJL Ester 7W
 Jad Ester 3750

Franchester of Wye#
 Shoshone Wendy D60
 Shoshone Pivot 6159
 Shoshone Frances 6347
 Shoshone Encore 6310
 Shoshone Ester 3116#
 M C C Logan
 Shoshone Ester 3128

<i>Scrotal</i>
37.5
<i>IMF Ratio</i>
121
<i>REA/cwt</i>
1.14

<i>Birth Wt</i>	<i>Wn Adj Wt</i>	<i>Wn Ratio</i>	<i>Yr Adj Wt</i>	<i>Yr Ratio</i>	<i>Gain Ratio</i>	<i>PAP</i>
83	557	96	991	96	95	37

<i>CED EPD</i>	<i>BW EPD</i>	<i>WN EPD</i>	<i>YW EPD</i>	<i>Milk EPD</i>	<i>\$EN</i>
-1	+2.3	+25	+32	+16	+24

Wil's 7W is the most ideal cow in her functional type that I know of. She's beautifully feminine, soft in her disposition, and ultra functionally efficient. Lot 8 is moderate, deep made, and quiet. Cow bull.



WJL Ester 7W *Dam of Lot 8*

9

Loyning 1138 El Caporal 335

Bull AAA 20796149 • Hot Brand 335 • 03/02/23

Sinclair Old Soul 9L16
Loyning El Caporal 1138
Loyning Ester 9047

Sinclair Plains Boss 5B02
Sinclair M Emulous 4ET1 D47#
Loyning Evolver 73
Loyning Ester 7007

Horse Butte 1116 of 3116
Loyning Ester 7006
Jad Ester 3750

Shoshone Encore 6310
Shoshone Ester 3116#
M C C Logan
Shoshone Ester 3128

Scrotal	37.5
IMF Ratio	95
REA/cwt	1.09

Birth Wt	Wn Adj Wt	Wn Ratio	Yr Adj Wt	Yr Ratio	Gain Ratio	PAP
80	540	93	1038	100	110	39
CED EPD	BW EPD	WN EPD	YW EPD	Milk EPD	\$EN	
+1	+1.4	+26	+48	+18	+20	

This bull lost his mother on the mountain late last summer, and its reflected in his weaning ratio. He fended for himself for about 60 days before weaning. His mother was a nice, full sister to our Boulder Top herd sire. Good 1138 son here. Cow bull.

10

Loyning 83 Ringo 337

Bull AAA 20796129 • Hot Brand 337 • 03/02/23

Horse Butte 7133 of 3131
Loyning 7133 Ringo 83
Jad Ester 3750

Horse Butte 1126 of 3128
Shoshone Ester 3131
M C C Logan
Shoshone Ester 3128

Horse Butte 7196 of 1916
Loyning Burgess Pride 5010
Loyning Burgess Pride 1008

Horse Butte 1116 of 3116
HBR Shoshone Ester 1916
Horse Butte 7133 of 3131
BT Burgess Pride 485P

Scrotal	36
IMF Ratio	91
REA/cwt	1.12

Birth Wt	Wn Adj Wt	Wn Ratio	Yr Adj Wt	Yr Ratio	Gain Ratio	PAP
80	554	96	1016	99	102	35
CED EPD	BW EPD	WN EPD	YW EPD	Milk EPD	\$EN	
+2	+1.9	+23	+33	+21	+21	

83 son from a solid range cow in 5010. 5010 is an easy doing, nice uddered, and I guaran-damn-tee no predator is ever going to get her calf. When tagging, I can get by her fine but she is very protective where everything else is concerned. 5010's last son she had in our sale has been very successful breeding cows in rough country in Nevada. This bull full of good Horse Butte-Encore-Ester breeding.

11

PSL 83 Ringo 338

Bull AAA 20796165 • Hot Brand 338 • 03/02/23

Horse Butte 7133 of 3131
Loyning 7133 Ringo 83
Jad Ester 3750

Horse Butte 1126 of 3128
Shoshone Ester 3131
M C C Logan
Shoshone Ester 3128

Oak Lane Beau 556
Oak Lane Blackbird 8103
Oak Lane Blackbird 266

Eston of Lookout 83Z
Oak Lane Blackbird 504
Jad Fremont Z6306
Oak Lane Blackbird 371

Scrotal	36.5
IMF Ratio	125
REA/cwt	1.37

Birth Wt	Wn Adj Wt	Wn Ratio	Yr Adj Wt	Yr Ratio	Gain Ratio	PAP
70	563	97	969	94	89	38
CED EPD	BW EPD	WN EPD	YW EPD	Milk EPD	\$EN	
+7	-0.9	+18	+22	+23	+23	

Sam's bull from his 8103 cow from Scott Shively's Oak Lane herd in Pleasant Lake ND. 8103 is moderate framed and functional. Lot 11 is moderate, thick, and has excellent ultrasound carcass data. He's lower birthweight as an individual but there is more birthweight potential in his ancestry, you be the judge.

12

Loyning 87 Echosmith 340 C

Bull AAA Purebred Bull • Hot Brand 340 • 03/02/23

Horse Butte Beetseed 313
Loyning Echosmith 87
HBR Shoshone Ester 7127

Shoshone Echo 1702
HBR Shoshone Ester 1130
Shoshone Echo 1702
Shoshone Ester 3128#

JAD Extra F3018
Loyning C Purebred Cow 117
Loyning C Purebred Cow 1024

N Bar Extra B310 A144
JAD Erica S41
Horse Butte 8116 of 9116
Loyning C Purebred Cow 500

Scrotal	40.5
IMF Ratio	81
REA/cwt	1.29

Birth Wt	Wn Adj Wt	Wn Ratio	Yr Adj Wt	Yr Ratio	Gain Ratio	PAP
74	625	105	1068	102	98	38
CED EPD	BW EPD	WN EPD	YW EPD	Milk EPD	\$EN	
na	na	na	na	na	na	

Good 87 son from a sturdy, nice uddered Johnny X daughter who traces her roots back to my original cow. Good heifer bull.

13

Loyning 92 Forkin 341 SH

Bull AAA Purebred Bull • Hot Brand 341 • 03/02/23

Shoshone Viking GD60#
Loyning Forkin 92
Shoshone Frances 6306

Franchester of Wye#
Shoshone Wendy D60
Shoshone Pivot 6159
Shoshone Frances 6347
Horse Butte 6141 of 3141
Jad Ester 3750
Horse Butte Beetseed 313
Shoshone Prudence 6124

Loyning Equinox 7
Loyning SH Prudence 9034
Loyning SH Prudence 5005

Scrotal
40
IMF Ratio
94
REA/cwt
1.12

Birth Wt	Wn Adj Wt	Wn Ratio	Yr Adj Wt	Yr Ratio	Gain Ratio	PAP
78	637	107	1136	109	111	39
CED EPD	BW EPD	WN EPD	YW EPD	Milk EPD	\$EN	
na	na	na	na	na	na	na

This 92 son is a tank. He's deep made, long, and thick. He comes by it naturally. His Equinox dam is made much the same but is still feminine and has an impeccable udder. She hails from the good Shoshone Prudence tribe, never a bad thing. This stud should be used on cows.



Loyning SH Prudence 9034
Dam of Lot 13



Gus



14

Loyning 76 Boulder Top 347

Bull AAA 20796132 • Hot Brand 347 • 03/04/23

Horse Butte 1116 of 3116
Loyning 1116 Encore 76
Jad Ester 3750

Shoshone Encore 6310
Shoshone Ester 3116#

M C C Logan
Shoshone Ester 3128

Horse Butte 796 of 9116
Loyning Ester 6003
HBR Shoshone Ester 7133

HBR 4C6 Ambush 917
HBR Shoshone Ester 9116

Horse Butte 1126 of 3128
Shoshone Ester 3131

Scrotal	35.5
IMF Ratio	87
REA/cwt	1.30

Birth Wt	Wn Adj Wt	Wn Ratio	Yr Adj Wt	Yr Ratio	Gain Ratio	PAP
81	552	95	1014	98	102	40
CED EPD	BW EPD	WN EPD	YW EPD	Milk EPD	\$EN	
+7	+0.0	+18	+29	+17	+22	

We retained Lot 14's maternal brother from last year's crop to breed our heifers. His dam, 6003, is moderate and feminine yet sturdy. She is very long from her hooks to her pins and might have the best udder on the ranch. Had we not kept his brother last year, this bull would be staying here to breed heifers. Excellent Boulder Top son.



Shoshone Ester 3116

3116 is the cow we try to intensify most in our program.
She is maternal finesse.
Thanks Dennis and Erica Voss for sharing her influence.



15

Loyning 92 Forkin 8007

Bull AAA 20796158 • Hot Brand 350 • 03/04/23

Shoshone Viking GD60#
Loyning Forkin 92
Shoshone Frances 6306

Franchester of Wye#
Shoshone Wendy D60
Shoshone Pivot 6159
Shoshone Frances 6347
Horse Butte 1126 of 3128
Shoshone Ester 3131
M C C Logan
Shoshone Ester 3128

Scrotal
36.5
IMF Ratio
64
REA/cwt
1.27

Horse Butte 7133 of 3131
Loyning Ester 8007#
Jad Ester 3750

Birth Wt	Wn Adj Wt	Wn Ratio	Yr Adj Wt	Yr Ratio	Gain Ratio	PAP
95	639	110	1101	106	102	37
CED EPD	BW EPD	WN EPD	YW EPD	Milk EPD	\$EN	
-6	+3.9	+30	+41	+22	+19	

Growthier 92 son from maybe the best flush sister to Loyning Etch 80, Ringo 81, and Ringo 83. She is ideal in her make-up and has achieved pathfinder status. Good bull for mature cows.

16

Loyning 92 Forkin 356

Bull AAA 20796151 • Hot Brand 356 • 03/05/23

Shoshone Viking GD60#
Loyning Forkin 92
Shoshone Frances 6306

Franchester of Wye#
Shoshone Wendy D60
Shoshone Pivot 6159
Shoshone Frances 6347
Horse Butte 1116 of 3116
Shoshone Ester 3141
M C C Logan
Shoshone Ester 3128

Scrotal
37.5
IMF Ratio
64
REA/cwt
1.13

Horse Butte 6141 of 3141
Loyning Ester 7005
Jad Ester 3750

Birth Wt	Wn Adj Wt	Wn Ratio	Yr Adj Wt	Yr Ratio	Gain Ratio	PAP
92	588	101	1022	99	95	41
CED EPD	BW EPD	WN EPD	YW EPD	Milk EPD	\$EN	
-3	+3.3	+29	+41	+17	+22	

Another 92 cow bull from a nice dam. I've always felt like his mother got a greater Rito contribution than her sisters. She's broader muzzled and leveler from her hooks to pins than the other 3750 daughters but is still nice uddered and has a very soft disposition.



Loyning Ester 7005

Dam of Lot 16



17 Loyning 76 Boulder Top 360

Bull AAA 20783255 • Hot Brand 360 • 03/05/23

Horse Butte 1116 of 3116 Shoshone Encore 6310
 Loyning 1116 Encore 76 Shoshone Ester 3116#
 Jad Ester 3750 M C C Logan
 Shoshone Ester 3128
 Papa Forte 1921# Papa Optima 9818
 Loyning Ester 7003 Papa Envious Blackbird 8832
 HBR Shoshone Ester 7133 Horse Butte 1126 of 3128
 Shoshone Ester 3131

Scrotal	37.5
IMF Ratio	85
REA/cwt	1.25

Birth Wt	Wn Adj Wt	Wn Ratio	Yr Adj Wt	Yr Ratio	Gain Ratio	PAP
78	621	107	1083	105	102	36
CED EPD	BW EPD	WN EPD	YW EPD	Milk EPD	\$EN	
+8	+1.2	+31	+46	+11	+18	

Excellent Boulder Top heifer bull. He reminds me very much of Horse Butte 7196 of 1916, who was bred similarly. The 7196's were/are everything you'd want from a range cow. Very self reliant and functionally efficient. I still have a bank of 7196 semen that I will plug back in here someday. Lot 17's dam is a flush sister to Loyning Evolver 73. She and her sisters are excellent cows. She would weigh about 1150 lbs and is ultra feminine and functional. Lot 17 is my kind of masculine/muscular and always seems to be in the fray to be the top of the pecking order. Another one I'd like to turn back out here.

18 Loyning 9L16 All Soul 364

Bull AAA 20796196 • Hot Brand 364 • 03/06/23

Sinclair Plains Boss 5B02 Sinclair Patriarch 3B47
 Sinclair Old Soul 9L16 Sinclair Lady Ida 7V19 04F3
 Sinclair M Emulous 4ET1 D47# N Bar Explosion TNT#
 N Bar Miss Emulous B514
 Sinclair Old Soul 9L16 Sinclair Plains Boss 5B02
 Loyning Frances 149 Sinclair M Emulous 4ET1 D47#
 Loyning Frances 9002 Horse Butte 6141 of 3141
 Shoshone Frances 6306

Scrotal	31.5
IMF Ratio	85
REA/cwt	1.21

Birth Wt	Wn Adj Wt	Wn Ratio	Yr Adj Wt	Yr Ratio	Gain Ratio	PAP
61	594	102	1000	96	89	39
CED EPD	BW EPD	WN EPD	YW EPD	Milk EPD	\$EN	
+8	-1.5	+28	+40	+23	+21	

Sire/daughter Old Soul son/grandson. The good Shoshone Frances 6306 cow is the anchor on the bottom side of the pedigree. Sleep all night heifer bull.

19

Loyning 81 Ringo 366

Bull AAA 20796160 • Hot Brand 366 • 03/06/23

Horse Butte 7133 of 3131
Loyning 7133 Ringo 81
Jad Ester 3750

Horse Butte 1126 of 3128
Shoshone Ester 3131
M C C Logan
Shoshone Ester 3128

Loyning 6141 Encore 612
Loyning Dottie 8034
Loyning Dottie 4035

Horse Butte 6141 of 3141
HBR Shoshone Ester 7133
Horse Butte 7133 of 3131
Loyning Dottie 968

Scrotal	35.5
IMF Ratio	67
REA/cwt	1.22

Birth Wt	Wn Adj Wt	Wn Ratio	Yr Adj Wt	Yr Ratio	Gain Ratio	PAP
69	541	93	895	86	78	37
CED EPD	BW EPD	WN EPD	YW EPD	Milk EPD	\$EN	
+6	-1.0	+16	+16	+23	+22	

Solid maternal genetics in this 81 son. His dam is ideal in her size, feminine, and excellent uddered. You be the judge as far as whether to use him on cows or heifers but beware there is some added birthweight potential,

20

Loyning 76 Boulder Top 371

Bull AAA 20796172 • Hot Brand 371 • 03/07/23

Horse Butte 1116 of 3116
Loyning 1116 Encore 76
Jad Ester 3750

Shoshone Encore 6310
Shoshone Ester 3116#
M C C Logan
Shoshone Ester 3128

Loyning Evolver 73
Loyning Ester 9047
Loyning Ester 7007

Papa Forte 1921#
HBR Shoshone Ester 7133
Horse Butte 6141 of 3141
Jad Ester 3750

Scrotal	37
IMF Ratio	130
REA/cwt	1.01

Birth Wt	Wn Adj Wt	Wn Ratio	Yr Adj Wt	Yr Ratio	Gain Ratio	PAP
84	582	100	1028	99	98	39
CED EPD	BW EPD	WN EPD	YW EPD	Milk EPD	\$EN	
+6	+0.8	+25	+42	+19	+19	

Boulder Top son from the dam of El Caporal 1138. I love this bull's dam and maternal granddam, 7007, they are very near ideal for me. His dam is the sweetest, softest, mother you could ever imagine. She is very feminine and a bit more angular than our average with an excellent udder. If you keep every daughter this bull leaves you, you won't be disappointed. Cow bull.

21

Loyning 81 Ringo 373 SH

Bull AAA Purebred Bull • Hot Brand 373 • 03/07/23

Horse Butte 7133 of 3131
Loyning 7133 Ringo 81
Jad Ester 3750

Horse Butte 1126 of 3128
Shoshone Ester 3131
M C C Logan
Shoshone Ester 3128

Shoshone 6356
Loyning SH Lucy 4018
Shoshone Lucy 882

Shoshone Bull
Shoshone Frances 6356
Shoshone Bull
Shoshone Lucy 8XX

Scrotal	37.5
IMF Ratio	108
REA/cwt	1.04

Birth Wt	Wn Adj Wt	Wn Ratio	Yr Adj Wt	Yr Ratio	Gain Ratio	PAP
70	574	96	1067	102	109	39
CED EPD	BW EPD	WN EPD	YW EPD	Milk EPD	\$EN	
na	na	na	na	na	na	

Quite a bit of muscle on this 81 son. His mother is a good 10 year old representative of the Shoshone 8 Lucy family. She is sturdy and feminine with an impeccable udder. She never draws attention to herself just quietly and effectively does her job. Lot 21 is lower birthweight but is pretty squarely made so I'd feel better if he were used on cows.

22

Loyning 73 Evolver 376 SH

Bull AAA Purebred Bull • Hot Brand 376 • 03/08/23

Papa Forte 1921#
Loyning Evolver 73
HBR Shoshone Ester 7133

Papa Optima 9818
Papa Envious Blackbird 8832
Horse Butte 1126 of 3128
Shoshone Ester 3131

Shoshone 6356
Loyning SH Lucy 4042
Shoshone Lucy 890

Shoshone Bull
Shoshone Frances 6356
Shoshone Bull
Shoshone Lucy 8XX

Scrotal	41.5
IMF Ratio	74
REA/cwt	1.20

Birth Wt	Wn Adj Wt	Wn Ratio	Yr Adj Wt	Yr Ratio	Gain Ratio	PAP
77	674	113	1148	110	105	39
CED EPD	BW EPD	WN EPD	YW EPD	Milk EPD	\$EN	
na	na	na	na	na	na	

The high performance bull of the Shoshone/Commercial purebred contemporary group. His dam is yet another 8 Lucy who quietly and effectively works. Solid stuff. I would be okay with using this one on heifers. Good Bull.

23

Loyning 73 Evolver 379

Bull AAA Purebred Bull • Hot Brand 379 • 03/08/23

Papa Forte 1921
Loyning Evolver 73
HBR Shoshone Ester 7133

Horse Butte 796 of 9116
Loyning Belle 1004
BT Miss Winton 365L

Papa Optima 9818
Papa Envious Blackbird 8832
Horse Butte 1126 of 3128
Shoshone Ester 3131
HBR 4C6 Ambush 917
HBR Shoshone Ester 9116
Hero 6267 of R R 2418#
BT Miss Winton Rito 185J

Scrotal	37
IMF Ratio	108
REA/cwt	1.04

Birth Wt	Wn Adj Wt	Wn Ratio	Yr Adj Wt	Yr Ratio	Gain Ratio	PAP
57	636	110	1070	104	95	37
CED EPD	BW EPD	WN EPD	YW EPD	Milk EPD	\$EN	
na	na	na	na	na	na	

This bull was born as half a set of twins with another bull. He was raised by his then 12 year old dam while his brother was grafted onto another cow. As the twins progressed through the summer it was pretty clear to me that they were fraternal twins and not identical twins, so far less likely to fertilize cows with semen that will split an egg into identical twins. Bovine twins are a love/hate hate thing for me. I love getting an extra calf as generally we'll need one at some point, but I loathe the extra amount of labor they might require. We're about making life easier for you, not making more work! I do love my human twins, but they can be a pain too! At any rate Lot 23 looks a lot like his sire and should make someone a good heifer bull. Lot 23 is not registered but could be.

24

Loyning 76 Boulder Top 380

Bull AAA 20796171 • Hot Brand 380 • 03/08/23

Horse Butte 1116 of 3116
Loyning 1116 Encore 76
Jad Ester 3750

Horse Butte 6141 of 3141
Loyning Frances 9005
Shoshone Frances 6306

Shoshone Encore 6310
Shoshone Ester 3116#
M C C Logan
Shoshone Ester 3128

Horse Butte 1116 of 3116
Shoshone Ester 3141
Shoshone Pivot 6159
Shoshone Frances 6347

Scrotal	38
IMF Ratio	151
REA/cwt	1.10

Birth Wt	Wn Adj Wt	Wn Ratio	Yr Adj Wt	Yr Ratio	Gain Ratio	PAP
80	603	104	1072	104	103	37
CED EPD	BW EPD	WN EPD	YW EPD	Milk EPD	\$EN	
+8	+0.4	+27	+42	+19	+16	

Lot 24's maternal ancestry is as strong as anything in this sale. The Shoshone cows I consider to be the big three, Ester 3116, Prudence 6157, and Frances 6357 all play important roles in his genetic make-up. Pedigrees don't lie and usually win the day. His dam is deep made, easy doing, excellent footed, and perfectly uddered. Lot 24 is slick haired, fired up, and ready to go. I would feel alright with using him on some heifers. Good maternal influencer.

25

Loyning 83 Ringo 389

Bull AAA 20796130 • Hot Brand 389 • 03/09/23

Horse Butte 7133 of 3131
Loyning 7133 Ringo 83
Jad Ester 3750

Jad Lad S6114 WT54
Loyning Belle 1004
Loyning Belle 1004

Horse Butte 1126 of 3128
Shoshone Ester 3131
M C C Logan
Shoshone Ester 3128
JAD Lad S6114
JAD Frances T54
Horse Butte 796 of 9116
BT Miss Winton 365L

Scrotal	38
IMF Ratio	98
REA/cwt	1.11

Birth Wt	Wn Adj Wt	Wn Ratio	Yr Adj Wt	Yr Ratio	Gain Ratio	PAP
79	595	103	1069	104	104	36
CED EPD	BW EPD	WN EPD	YW EPD	Milk EPD	\$EN	
+3	+0.7	+22	+33	+25	+18	

Nice 83 son with nothing but useful, solid range cows in his background. You be the judge in terms of calving ease.



26

Loyning 92 Forkin 391

Bull AAA 20796140 • Hot Brand 391 • 03/10/23

Shoshone Viking GD60#
Loyning Forkin 92
Shoshone Frances 6306

Franchester of Wye#
Shoshone Wendy D60
Shoshone Pivot 6159
Shoshone Frances 6347

Horse Butte 1116 of 3116
Loyning Ester 6750
Jad Ester 3750

Shoshone Encore 6310
Shoshone Ester 3116#
M C C Logan
Shoshone Ester 3128

Scrotal
38
IMF Ratio
64
REA/cwt
1.22

Birth Wt	Wn Adj Wt	Wn Ratio	Yr Adj Wt	Yr Ratio	Gain Ratio	PAP
87	607	105	1065	103	101	39
CED EPD	BW EPD	WN EPD	YW EPD	Milk EPD	\$EN	
-2	+2.9	+30	+42	+17	+22	

Handsomeness 92 son from our 6750 cow. 6750 was raised as 3750's natural calf following us flushing her. This bull gets better and better by the day. Level topped, athletic, clean made, attractive. Excellent cow bull.

27

Loyning 73 Evolver 393 SH

Bull AAA Purebred Bull • Hot Brand 393 • 03/11/23

Papa Forte 1921#
Loyning Evolver 73
HBR Shoshone Ester 7133

Papa Optima 9818
Papa Envious Blackbird 8832
Horse Butte 1126 of 3128
Shoshone Ester 3131

Shoshone 6356
Loyning SH Eileen 4027
Shoshone Eileen 2037

Shoshone Bull
Shoshone Frances 6356
Horse Butte 1126 of 3128
Shoshone Eileen 20XX

Scrotal
41.5
IMF Ratio
106
REA/cwt
1.18

Birth Wt	Wn Adj Wt	Wn Ratio	Yr Adj Wt	Yr Ratio	Gain Ratio	PAP
79	633	106	1033	99	89	36
CED EPD	BW EPD	WN EPD	YW EPD	Milk EPD	\$EN	
na	na	na	na	na	na	

We have a burly, masculine, muscular 73 son here. His 10 year old dam is wedge shaped, feminine, perfect uddered, and dependable. His dam trends lower birthweight so I would feel okay if this bull were to be used on heifers.

28

Loyning 83 Ringo 394 C

Bull AAA Purebred Bull • Hot Brand 394 • 03/11/23

Horse Butte 7133 of 3131
Loyning 7133 Ringo 83
Jad Ester 3750

Horse Butte 1126 of 3128
Shoshone Ester 3131

Loyning Pistol 3061
Loyning C Purebred Cow 6011
Loyning C Purebred Cow 4011

M C C Logan
Shoshone Ester 3128
Horse Butte 7196 of 1916
JAD Prudence 6110
Horse Butte 7196 of 1916
Loyning C Purebred Cow 0031

Scrotal
35.5
IMF Ratio
104
REA/cwt
1.01

Birth Wt	Wn Adj Wt	Wn Ratio	Yr Adj Wt	Yr Ratio	Gain Ratio	PAP
79	581	97	1024	98	98	38
CED EPD	BW EPD	WN EPD	YW EPD	Milk EPD	\$EN	
na	na	na	na	na	na	

Rangier 83 son here. His dam is a sharp made 3061 daughter. "Simply Maternal" stuff. Cow bull.

29

Loyning 83 Ringo 396

Bull AAA 20796125 • Hot Brand 396 • 03/11/23

Horse Butte 7133 of 3131
Loyning 7133 Ringo 83
Jad Ester 3750

Horse Butte 1126 of 3128
Shoshone Ester 3131
M C C Logan
Shoshone Ester 3128

Indreland Ext 0901
Indreland Juanada Anne 2137
Indreland Juanada Anne 0403

Indreland Ext 5520
Indreland Ext 6005#
Indreland Ext 5520
Indreland Ext 6005#

Scrotal	36.5
IMF Ratio	70
REA/cwt	1.30

Birth Wt	Wn Adj Wt	Wn Ratio	Yr Adj Wt	Yr Ratio	Gain Ratio	PAP
68	586	101	1004	97	92	40
CED EPD	BW EPD	WN EPD	YW EPD	Milk EPD	\$EN	
+8	-1.6	+19	+24	+28	+19	

Nice 83 heifer bull. He was raised by an 11 year old cow we brought in to sample Indreland Angus genetics. She was smaller and plainer than our average but functional and productive.

30

Loyning 00V10 Kevin 399

Bull AAA 20796181 • Hot Brand 399 • 03/12/23

Sinclair Emperor 6X02
Sinclair Emulation 00V10
Sinclair K Bty 5RX21 0F1

Sinclair Emperor 0XT51
Sinclair Ms Emulous 2V20 A40
Sinclair Rito 2R1
Sinclair K Bty 0F1 2V3

Loyning 6141 Encore 612
Loyning Lady Ida 072
FairView Lady Ida 6069

Horse Butte 6141 of 3141
HBR Shoshone Ester 7133
Eston of Lookout 83Z
FairView Lady Ida 4246

Scrotal	38
IMF Ratio	115
REA/cwt	1.15

Birth Wt	Wn Adj Wt	Wn Ratio	Yr Adj Wt	Yr Ratio	Gain Ratio	PAP
84	706	122	1140	110	95	39
CED EPD	BW EPD	WN EPD	YW EPD	Milk EPD	\$EN	
-1	+2.3	+43	+68	+25	+10	

Thick, rugged made Kevin son with more bone and substance than average. His pedigree is made up of outcrosses but his dam is very ideal in her type as are ALL of the 612 daughters. He should be a good bull to add more terminal merit and still leave you with some useful females. Sturdy cow bull.

31

Loyning 92 Forkin 3102 SH

Bull AAA Purebred Bull • Hot Brand 3102 • 03/12/23

Shoshone Viking GD60#
Loyning Forkin 92
Shoshone Frances 6306

Franchester of Wye#
Shoshone Wendy D60
Shoshone Pivot 6159
Shoshone Frances 6347

Loyning Erector 75
Loyning SH Prudence 9036
Loyning SH Prudence 5029

Horse Butte 6141 of 3141
Jad Ester 3750
Shoshone 6356
Shoshone Prudence 6124

Scrotal	36.5
IMF Ratio	113
REA/cwt	1.23

Birth Wt	Wn Adj Wt	Wn Ratio	Yr Adj Wt	Yr Ratio	Gain Ratio	PAP
87	612	103	1031	99	93	39
CED EPD	BW EPD	WN EPD	YW EPD	Milk EPD	\$EN	
na	na	na	na	na	na	

I love the type of lot 31's damn. She's an Erector 75 daughter who is wedge shaped, angular, feminine, perfect uddered, and very much in harmony with my environment here. If I could draw up MY perfect cow, it would look a whole lot like her. Extra maternal goodness in this good cow bull. I really like him.



Loyning SH Prudence 9036

Dam of Lot 31 on the mountain July 2, 2022

32

Loyning 81 Ringo 3106

Bull AAA 20796138 • Hot Brand 3106 • 03/13/23

Horse Butte 7133 of 3131
Loyning 7133 Ringo 81
Jad Ester 3750

Horse Butte 1126 of 3128
Shoshone Ester 3131
M C C Logan
Shoshone Ester 3128

Loyning Pistol 3061
Loyning Pride 5003
Loyning Pride 3047

Horse Butte 7196 of 1916
Jad Prudence 6110
Horse Butte 8116 of 9116
Loyning Dot's Pride 931

Scrotal	39
IMF Ratio	92
REA/cwt	1.23

Birth Wt	Wn Adj Wt	Wn Ratio	Yr Adj Wt	Yr Ratio	Gain Ratio	PAP
83	607	105	1093	106	107	38
CED EPD	BW EPD	WN EPD	YW EPD	Milk EPD	\$EN	
+1	+1.5	+33	+53	+20	+14	

This 81 son is out of a good 9 year old Pistol 3061 daughter. His dam calved really late one year, earlier in her career, but caught right back up, settled in, and hasn't missed a lick since. Good cow bull.

33

Loyning 92 Forkin 3109

Bull AAA 20796168 • Hot Brand 3109 • 03/13/23

Shoshone Viking GD60#
Loyning Forkin 92
Shoshone Frances 6306

Franchester of Wye#
Shoshone Wendy D60

Loyning Esteem 4133
Loyning Dottie 9029
Loyning Dottie 4035

Shoshone Pivot 6159
Shoshone Frances 6347
Horse Butte 2116 of 9116
HBR Shoshone Ester 7133
Horse Butte 7133 of 3131
Loyning Dottie 968

Scrotal	35.5
IMF Ratio	75
REA/cwt	1.23

Birth Wt	Wn Adj Wt	Wn Ratio	Yr Adj Wt	Yr Ratio	Gain Ratio	PAP
85	558	96	980	95	93	36
CED EPD	BW EPD	WN EPD	YW EPD	Milk EPD	\$EN	
-2	+2.4	+23	+30	+16	+26	

This 92 son would probably prefer the big country over the barnyard as would his dam. His dam is a cagey Esteem daughter with a nice udder. She likes to think she's smarter than us humans and she probably is. I'd bet he'll be good at covering country and settling cows. Cow bull.

34

Loyning 81 Ringo 3111 C

Bull AAA Purebred Bull • Hot Brand 3111 • 03/14/23

Horse Butte 7133 of 3131
Loyning 7133 Ringo 81
Jad Ester 3750

Horse Butte 1126 of 3128
Shoshone Ester 3131

Horse Butte 7196 of 1916
Loyning C Purebred Cow 1081
Loyning C Purebred Cow 3044

M C C Logan
Shoshone Ester 3128
Horse Butte 1116 of 3116
HBR Shoshone Ester 1916
Horse Butte Beetseed 313
Loyning C Purebred Cow 500

Scrotal	36
IMF Ratio	99
REA/cwt	1.18

Birth Wt	Wn Adj Wt	Wn Ratio	Yr Adj Wt	Yr Ratio	Gain Ratio	PAP
80	651	109	1131	108	106	37
CED EPD	BW EPD	WN EPD	YW EPD	Milk EPD	\$EN	
na	na	na	na	na	na	

If an outfit's herd was made up of cows like the dam of Lot 34 it just couldn't help but be profitable. She's 13 years old never and missed a lick in our program which is very much at the mercy of mother nature's whims. She stems from my very original cow and is very near and dear to me. If you want to buy into the program this is an excellent choice. I can look back in my minds eye and see those cows all the way back to the beginning and they were solid. I really like this bull.

36

Loyning 73 Evolver 3117 C

Bull AAA Purebred Bull • Hot Brand 3117 • 03/15/23

Papa Forte 1921#
Loyning Evolver 73
HBR Shoshone Ester 7133

Papa Optima 9818
Papa Envious Blackbird 8832
Horse Butte 1126 of 3128
Shoshone Ester 3131
Horse Butte 7196 of 1916
Jad Prudence 6110
Horse Butte 7133 of 3131
Loyning C Purebred Cow 15

Scrotal
39
IMF Ratio
76
REA/cwt
1.09

Birth Wt	Wn Adj Wt	Wn Ratio	Yr Adj Wt	Yr Ratio	Gain Ratio	PAP
89	631	106	1087	104	101	38
CED EPD	BW EPD	WN EPD	YW EPD	Milk EPD	\$EN	
na	na	na	na	na	na	

I realize we skipped lot 35. There is a good reason as he pretty well made an ass of himself while we were filming for the sale the other day. Poor decision on his part as he will now enter the food chain much sooner than the original plan. Enough of that. We've got far more agreeable bulls to offer such as this good bull of Sam's. Lot 36's dam is sturdy, good uddered, and very dependable. Solid cow bull.

37

Loyning 92 Forkin 3120 C

Bull AAA Purebred Bull • Hot Brand 3120 • 03/15/23

Shoshone Viking GD60#
Loyning Forkin 92
Shoshone Frances 6306

Franchester of Wye#
Shoshone Wendy D60
Shoshone Pivot 6159
Shoshone Frances 6347
Horse Butte 2116 of 9116
HBR Shoshone Ester 7133
JAD Lad LX T2164 WP07
Loyning C Purebred Cow 958

Scrotal
32.5
IMF Ratio
82
REA/cwt
1.36

Birth Wt	Wn Adj Wt	Wn Ratio	Yr Adj Wt	Yr Ratio	Gain Ratio	PAP
74	567	95	1017	97	100	38
CED EPD	BW EPD	WN EPD	YW EPD	Milk EPD	\$EN	
na	na	na	na	na	na	

Clean made 92 son from a good young Esteem 4133 daughter. Good stuff top and bottom in this cow bull.

38

JAL 76 Boulder Top 3130 C

Bull AAA Purebred Bull • Hot Brand 3130 • 03/18/23

Horse Butte 1116 of 3116
Loyning 1116 Encore 76
Jad Ester 3750

Sinclair Express 8V18
JAL C Purebred Cow J01
Loyning C Purebred Cow 8019

Shoshone Encore 6310
Shoshone Ester 3116#
M C C Logan
Shoshone Ester 3128
N Bar Emulation Ext A1747
Sinclair Delia 1X70 404
Loyning 6141 Encore 612
Loyning C Purebred Cow 1081

Scrotal
35.5
IMF Ratio
156
REA/cwt
1.13

Birth Wt	Wn Adj Wt	Wn Ratio	Yr Adj Wt	Yr Ratio	Gain Ratio	PAP
80	654	110	1134	108	106	36
CED EPD	BW EPD	WN EPD	YW EPD	Milk EPD	\$EN	
na	na	na	na	na	na	

Josie's bull here is square made and very attractive. He was a bit stiff on the day we filmed sale videos. Our breeding soundness exam was just two days before that and they have really been fighting/riding ever since. He's fine and I bet he will strut come sale day. Lot 38 is a nice example of a Shoshone/Emulation linecross. His dam is deep made, feminine, with the udder you'd expect from her pedigree. Her dam is Josie's 8019 cow who is a daughter of 1081. 1081 is the dam of lot 34, and maternal granddam of lot 6. Excellent choice for heifers or cows.

39

Loyning 76 Boulder Top 3131

Bull AAA 20796180 • Hot Brand 3131 • 03/18/23

Horse Butte 1116 of 3116 Shoshone Encore 6310
 Loyning 1116 Encore 76 Shoshone Ester 3116#
 Jad Ester 3750 M C C Logan
 Shoshone Ester 3128
 Loyning Esteem 4133 Horse Butte 2116 of 9116
 Loyning Ester 037 HBR Shoshone Ester 7133
 Loyning Ester 6002 Horse Butte 796 of 9116
 HBR Shoshone Ester 7133

Scrotal	35
IMF Ratio	97
REA/cwt	1.11

Birth Wt	Wn Adj Wt	Wn Ratio	Yr Adj Wt	Yr Ratio	Gain Ratio	PAP
69	569	98	991	96	93	37
CED EPD	BW EPD	WN EPD	YW EPD	Milk EPD	\$EN	
+7	+0.2	+27	+35	+10	+25	

Moderate, masculine heifer bull. Off the top of my head there is 13 shots of Shoshone Ester 3116 pretty close up in this pedigree. I really like his young dam, 037. She is very feminine, perfectly uddered, and functionally efficient. 037 calved late as a heifer, caught back up significantly with the birth of Lot 39, and calved right at the front end this year. She looks poised to be one of the "picture cows" moving forward. I really toyed with the idea of keeping this bull to breed heifers here as he is just a bit different than the other Boulder Top sons. This good bull has an organized pedigree to back him.



Loyning Ester 037
 Dam of Lot 39

40

Loyning 92 Forkin 3134 SH

Bull AAA Purebred Bull • Hot Brand 3134 • 03/18/23

Shoshone Viking GD60# Franchester of Wye#
 Loyning Forkin 92 Shoshone Wendy D60
 Shoshone Frances 6306 Shoshone Pivot 6159
 Shoshone Frances 6347
 Loyning 7128 Ben 60 Horse Butte 7128 of 3128
 Loyning SH Frances 9041 HBR Shoshone Ester 7133
 Loyning SH Frances 3052 Shoshone 6356
 Shoshone Frances 6373

Scrotal	36.5
IMF Ratio	124
REA/cwt	1.24

Birth Wt	Wn Adj Wt	Wn Ratio	Yr Adj Wt	Yr Ratio	Gain Ratio	PAP
88	603	101	979	93	83	38
CED EPD	BW EPD	WN EPD	YW EPD	Milk EPD	\$EN	
na	na	na	na	na	na	

While we generally offer bulls chocked full of "Ester," this one is more full up on Frances. If you've been to tour Shoshone, you'd note that there are a pile of cows with numbers beginning with 63. Those are the Franceses. The Franceses who is the mother of this good bull is impeccably uddered, feminine, and approaching ideal in her type. Solid cow bull.

41

WJL 76 Boulder Top 3150

Bull AAA 20796135 • Hot Brand 3150 • 03/25/23

Horse Butte 1116 of 3116 Shoshone Encore 6310
 Loyning 1116 Encore 76 Shoshone Ester 3116#
 Jad Ester 3750 M C C Logan
 Shoshone Ester 3128
 Horse Butte 796 of 9116 HBR 4C6 Ambush 917
 WJL Clovanada 596# HBR Shoshone Ester 9116
 Cole Creek Clovanada 583 Cole Creek Black Seal 230
 Cole Creek Clovanada 24S

Scrotal	34
IMF Ratio	136
REA/cwt	0.97

Birth Wt	Wn Adj Wt	Wn Ratio	Yr Adj Wt	Yr Ratio	Gain Ratio	PAP
72	624	108	1098	106	104	37
CED EPD	BW EPD	WN EPD	YW EPD	Milk EPD	\$EN	
+12	-1.3	+29	+49	+21	+9	

Handsome headed (unlike his owner), high capacity Boulder Top son of Wil's. His 9 year old pathfinder dam is broad muzzled, good footed, perfect uddered, and just doesn't miss. Lot 41 had one of the higher ultrasound IMF scans. Good all-around heifer bull here.

42

Loyning 82 Johnny X 3154

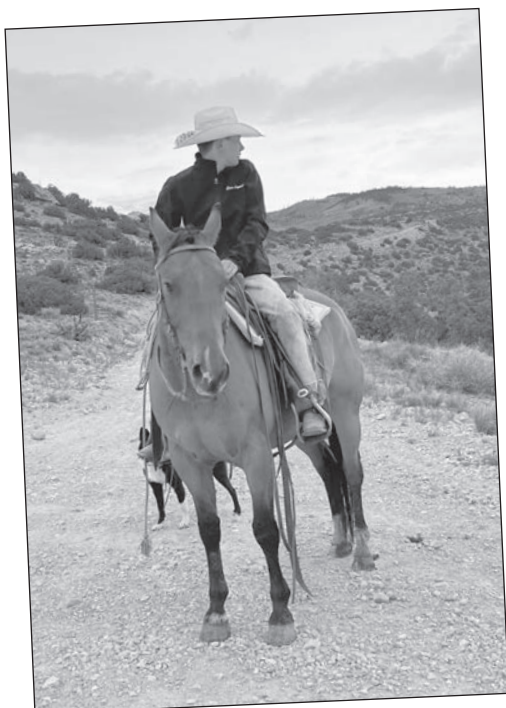
Bull AAA 20796177 • Hot Brand 3154 • 03/25/23

N Bar Extra B310 A144 N Bar Emulation Ext Z52
 JAD Extra F3018 N Bar Primrose Y3051#
 JAD Erica S41 JAD Prudent Lad 6157
 Shoshone Erica A344
 Loyning Esteem 4133 Horse Butte 2116 of 9116
 Loyning Ester 003 HBR Shoshone Ester 7133
 Loyning Ester 6750 Horse Butte 1116 of 3116
 Jad Ester 3750

Scrotal	35.5
IMF Ratio	77
REA/cwt	1.09

Birth Wt	Wn Adj Wt	Wn Ratio	Yr Adj Wt	Yr Ratio	Gain Ratio	PAP
72	542	93	1028	99	107	37
CED EPD	BW EPD	WN EPD	YW EPD	Milk EPD	\$EN	
+5	+0.0	+31	+56	+17	+13	

Johnny X Heifer bull from an excellent young Esteem daughter, 003. We pulled 003's son from the sale last year and kept him to use as a heifer bull here. 003 is just really hitting her stride and it looks like she'll have another bull in next year's sale. She is pretty complete. We have calved several heifers bred similarly to Lot 42 this spring and its all good. They are long, broody, and appear milky with excellent udders. Lots of commercial, economic relevance in these Johnny X cattle.



Sam



43

Loyning 93 Echosmith 3162

Bull AAA 20796152 • Hot Brand 3162 • 03/28/23

Horse Butte Beetseed 313 Shoshone Echo 1702
 Loyning Echosmith 93 HBR Shoshone Ester 1130
 HBR Shoshone Ester 7127 Shoshone Echo 1702
 Shoshone Ester 3128#
 Horse Butte 6141 of 3141 Horse Butte 1116 of 3116
 Loyning Ester 7007 Shoshone Ester 3141
 Jad Ester 3750 M C C Logan
 Shoshone Ester 3128

Scrotal	38
IMF Ratio	72
REA/cwt	1.43

Birth Wt	Wn Adj Wt	Wn Ratio	Yr Adj Wt	Yr Ratio	Gain Ratio	PAP
80	562	97	1008	98	98	39
CED EPD	BW EPD	WN EPD	YW EPD	Milk EPD	\$EN	
+5	+0.9	+27	+37	+13	+23	

Interesting bull here. He's the only 93 son in the sale and his mother is on heck of of nice cow. She is a full sister to Equinox, Erector, Encore 71, and a whole batch of good cows here. This guy has an excellent disposition, always coming to check me out, lick my coat, I guess he wants the attention. "Hey you dip! Look at me!" He's worth looking at, too. Long, strong top, nice headed, with a bit more muscle than I would've expected given his pedigree. He also scored pretty high on ultrasound REA. Loads of "Simply Maternal" in Lot 43. You be the judge in terms of calving ease with this good bull.



Josie got in the branding pen this year

44

Loyning 92 Forkin 3168

Bull AAA 20796174 • Hot Brand 3168 • 04/01/23

Shoshone Viking GD60#
Loyning Forkin 92
Shoshone Frances 6306

Loyning Equinox 7
Loyning Ester 9007#
Loyning Ester 7003

Franchester of Wye#
Shoshone Wendy D60
Shoshone Pivot 6159
Shoshone Frances 6347
Horse Butte 6141 of 3141
Jad Ester 3750
Papa Forte 1921#
HBR Shoshone Ester 7133

Scrotal	35
IMF Ratio	78
REA/cwt	1.37

Birth Wt	Wn Adj Wt	Wn Ratio	Yr Adj Wt	Yr Ratio	Gain Ratio	PAP
82	623	107	1034	100	90	37
CED EPD	BW EPD	WN EPD	YW EPD	Milk EPD	\$EN	
+1	+2.2	+26	+34	+21	+22	

92 son out of a pathfinder Equinox 7 daughter with knockout good looks. She's long, she's feminine, she's the right size, she's fertile, she's good uddered, like the band Shocking Blue sang in the song Venus "She's got it, yeah baby, she's got it." Long made cow bull here.



Loyning Ester 9007

Dam of Lot 44 and maternal sister to Lot 17

45

WJL 00V10 Kevin 3169

Bull AAA 20796187 • Hot Brand 3169 • 04/01/23

Sinclair Emperor 6XO2
Sinclair Emulation 00V10
Sinclair K Bty 5RX21 0F1

Loyning 7133 Ringo 81
WJL Clovanada 083
Cole Creek Clovanada 583

Sinclair Emperor 0XT51
Sinclair Ms Emulous 2V20 A40
Sinclair Rito 2R1
Sinclair K Bty 0F1 2V3
Horse Butte 7133 of 3131
Jad Ester 3750
Cole Creek Black Seal 230
Cole Creek Clovanada 24S

Scrotal	33.5
IMF Ratio	134
REA/cwt	1.10

Birth Wt	Wn Adj Wt	Wn Ratio	Yr Adj Wt	Yr Ratio	Gain Ratio	PAP
84	602	104	1116	108	113	36
CED EPD	BW EPD	WN EPD	YW EPD	Milk EPD	\$EN	
-2	+3.1	+43	+77	+25	+6	

Wil's Kevin son from his good 81 daughter, 083. 083 is easy doing, wedge shaped, with a nice udder. She's just getting going but if this calf is an indication of what's to come bright days are ahead for her. Lot 45 is a thick made easy doing kind of bull with all kinds of solid behind him. Good cow bull.

46

Loyning 92 Forkin 3171

Bull AAA 20796156 • Hot Brand 3171 • 04/02/23

Shoshone Viking GD60#
Loyning Forkin 92
Shoshone Frances 6306

Horse Butte 7133 of 3131
Loyning Ester 8004
Jad Ester 3750

Franchester of Wye#
Shoshone Wendy D60
Shoshone Pivot 6159
Shoshone Frances 6347
Horse Butte 1126 of 3128
Shoshone Ester 3131
M C C Logan
Shoshone Ester 3128

Scrotal	31.5
IMF Ratio	68
REA/cwt	1.21

Birth Wt	Wn Adj Wt	Wn Ratio	Yr Adj Wt	Yr Ratio	Gain Ratio	PAP
84	562	97	984	95	93	36
CED EPD	BW EPD	WN EPD	YW EPD	Milk EPD	\$EN	
-2	+2.3	+22	+27	+21	+22	

Clean patterned 92 son from a solid 7133 daughter. Cow bull.

47

WJL 82 Johnny X 3173

Bull AAA 20796173 • Hot Brand 3173 • 04/02/23

N Bar Extra B310 A144
 JAD Extra F3018
 JAD Erica S41
 Loyning Evolver 73
 WJL Ester 9W
 WJL Ester 7W

N Bar Emulation Ext Z52
 N Bar Primrose Y3051#
 JAD Prudent Lad 6157
 Shoshone Erica A344
 Papa Forte 1921#
 HBR Shoshone Ester 7133
 Horse Butte 1116 of 3116
 Jad Ester 3750

Scrotal	37
IMF Ratio	119
REA/cwt	1.20

Birth Wt	Wn Adj Wt	Wn Ratio	Yr Adj Wt	Yr Ratio	Gain Ratio	PAP
71	578	100	1012	98	95	36
CED EPD	BW EPD	WN EPD	YW EPD	Milk EPD	\$EN	
+9	-1.2	+26	+42	+22	+17	

This Johnny X heifer bull comes from Wil's 9W cow. 9W is an ultra sharp made Evolver daughter of his 7W cow. She is beautiful in her femininity, and very functionally efficient. Lot 47's pedigree is full of cattle who are/were successful range cow producers and I suspect he'll continue that heritage.

48

Loyning 00V10 Kevin 3175

Bull AAA 20796144 • Hot Brand 3175 • 04/04/23

Sinclair Emperor 6X02
 Sinclair Emulation 00V10
 Sinclair K Bty 5RX21 0F1
 Dimond Beau 674
 Loyning Prudence 7009#
 Jad Prudence 6110

Sinclair Emperor OXT51
 Sinclair Ms Emulous 2V20 A40
 Sinclair Rito 2R1
 Sinclair K Bty 0F1 2V3
 Horse Butte 6141 of 3141
 Dimond Ester 441-168
 Shoshone 130-6357
 Shoshone Prudence 6157

Scrotal	37
IMF Ratio	102
REA/cwt	1.15

Birth Wt	Wn Adj Wt	Wn Ratio	Yr Adj Wt	Yr Ratio	Gain Ratio	PAP
78	654	113	1243	120	130	38
CED EPD	BW EPD	WN EPD	YW EPD	Milk EPD	\$EN	
+1	+1.7	+47	+83	+19	-2	

The performance standout of the set. You name it, he did it better than pretty much everyone else. While he is full of potential terminal merit, don't write him of in terms of maternal potential. His pathfinder dam is excellent. Feminine, wedge shaped, broody, productive, and perfect uddered. She hails from the great Shoshone Prudence cow family with 6157 being her maternal grandmother. These first Kevin daughters we are calving also are broody, excellent uddered, with quiet maternal dispositions. This good bull should probably be used on cows,



Shoshone Prudence 6157
 Maternal great granddam of Lot 48

49

Loyning 82 Johnny X 3178

Bull AAA 20796184 • Hot Brand 3178 • 04/07/23

N Bar Extra B310 A144
 JAD Extra F3018
 JAD Erica S41

N Bar Emulation Ext Z52
 N Bar Primrose Y3051#
 JAD Prudent Lad 6157
 Shoshone Erica A344

Loyning Echosmith 87
 Loyning Ester 050
 Loyning Ester 8004

Horse Butte Beetseed 313
 HBR Shoshone Ester 7127
 Horse Butte 7133 of 3131
 Jad Ester 3750

Scrotal	34
IMF Ratio	132
REA/cwt	1.11

Birth Wt	Wn Adj Wt	Wn Ratio	Yr Adj Wt	Yr Ratio	Gain Ratio	PAP
84	616	106	1107	107	108	36
CED EPD	BW EPD	WN EPD	YW EPD	Milk EPD	\$EN	
+1	+2.1	+34	+58	+22	+6	

Good Johnny X son from a sharp made Echosmith 87 daughter. His dam is Shoshone "Yellow" in her type that is just getting started here, and has all the pieces I have spouted out over and over while writing these footnotes. As far as calving ease goes, you be the judge on this one, but I think he'd probably work fine.

50

Loyning 9L16 Old Soul 3181

Bull AAA 20796153 • Hot Brand 3181 • 04/08/23

Sinclair Plains Boss 5BO2
 Sinclair Old Soul 9L16
 Sinclair M Emulous 4ET1 D47#

Sinclair Patriarch 3B47
 Sinclair Lady Ida 7V19 04F3
 N Bar Explosion TNT#
 N Bar Miss Emulous B514

Loyning 6141 Encore 612
 Loyning Burgess Pride 8025
 Loyning Burgess Pride 1008

Horse Butte 6141 of 3141
 HBR Shoshone Ester 7133
 Horse Butte 7133 of 3131
 BT Burgess Pride 485P

Scrotal	35.5
IMF Ratio	87
REA/cwt	1.10

Birth Wt	Wn Adj Wt	Wn Ratio	Yr Adj Wt	Yr Ratio	Gain Ratio	PAP
72	649	112	1140	110	108	38
CED EPD	BW EPD	WN EPD	YW EPD	Milk EPD	\$EN	
+7	-0.2	+33	+54	+26	+16	

Old Soul son from one of my favorite 612 daughters. In reality it's pretty hard to pick a favorite 612 as they are carbon copies of one another and are all near ideal. This is a nice younger bull who is always trying to establish his dominance in the group. He's like a terrier, no back down in his DNA. Lot 50 had a lower birthweight himself, but his mother had a 93 lb heifer calf the other day. I would probably lean towards using him on cows, but you decide.



Loyning Burgess Pride 8025

Dam of Lot 50

ONE MORE DAY

Even with our progress
 some things stay the same.
 Cattle still need brandin'.
 There are horses yet to tame.

Cowboys will always ride.
 They'll head, heel, and haze.
 Making lasting memories,
 these are their "good old days."

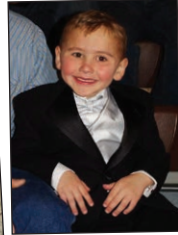
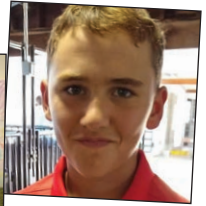
As the lonesome sun is setting
 on our last sky of blue,
 we'll think back on good times and friends
 who helped make dreams come true.

The only favor I would ask
 before I'm called away,
 is let me be a cowboy
 again for one more day.

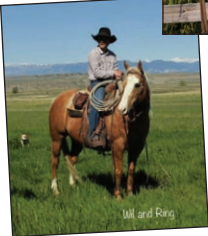




This mystery man wandered in from Northwest of here this summer - stay tuned for next year's sale to learn more about him.



CONGRATULATIONS WIL! CLASS OF 2024





307-271-1786

bbloyning@tctwest.net

PO Box 194

Frannie, WY 82423

FIRST CLASS

US Postage

Paid

Ballyhoo Printing

59457

*6th Annual
Bull Sale*

Saturday

**April 20, 2024 • 5 pm
Warren, MT**